

OVERVIEW

NORTH BURNETT REGIONAL COUNCIL

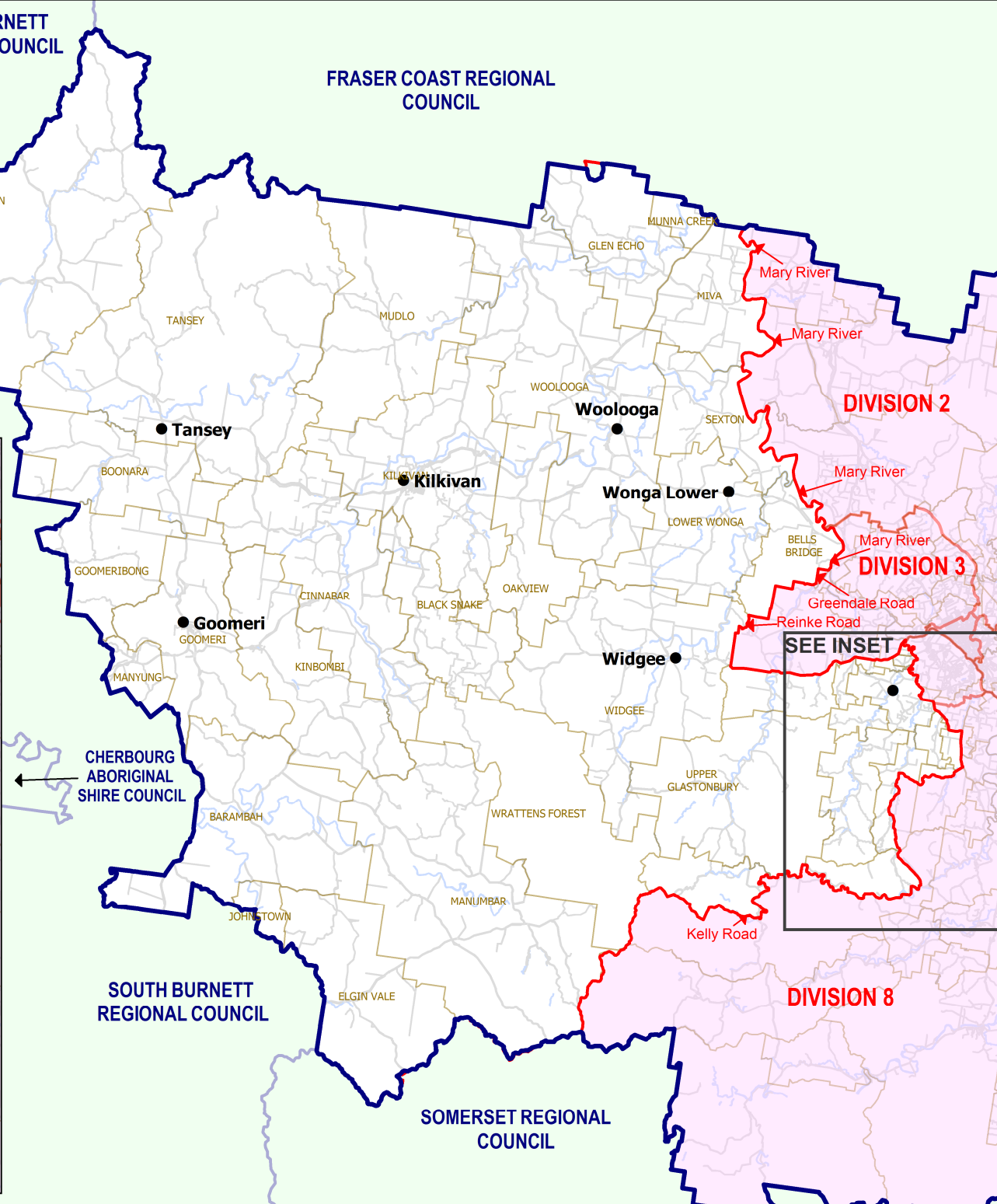
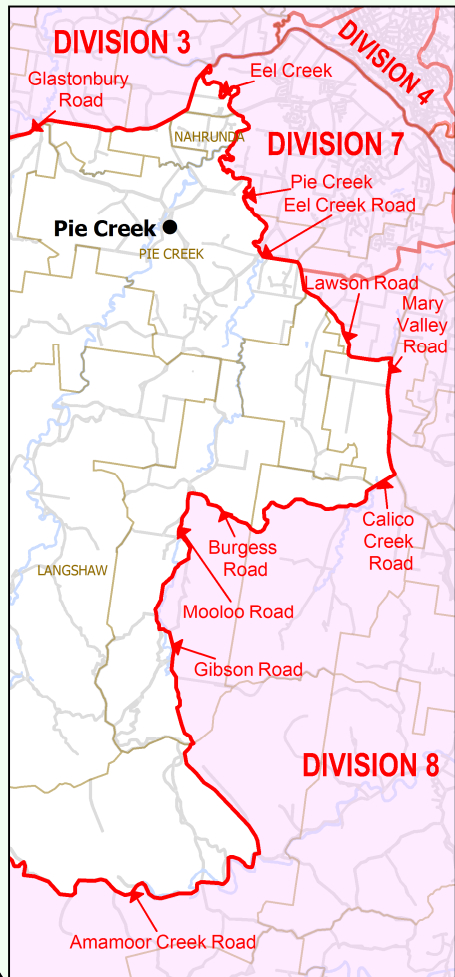
FRASER COAST REGIONAL COUNCIL



QUADRENNIAL ELECTION 2012

**Polling Booth Location Map
GYMPIE REGIONAL COUNCIL
DIVISION 6**

INSET



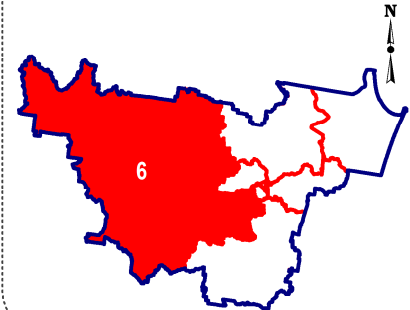
**OPTIONAL PREFERENTIAL VOTING
ATTENDANCE BALLOT**

Polling Booths:	7
Electors :	3,878
Close of Roll:	25 February 2012

LEGEND

- **Booth Name**
- **Council Boundary**
- **Division Boundary**
- **Adjacent Area**
- COUNCIL NAME**
or
DIVISION NUMBER

LOCALITY MAP



DISCLAIMER

While every care is taken to ensure the accuracy of this data, the Electoral Commission of Queensland (ECQ) makes no representations or warranties about its accuracy, reliability, completeness or suitability for any particular purpose and disclaims all responsibility and all liability (including, without limitation, liability in negligence) for all expenses, losses, damages (including indirect and consequential damage) and cost which might be incurred as a result of the data being inaccurate or incomplete in any way and for any reason. This map has been produced by the ECQ as a guide to show the location of the Local Area Electoral Boundaries and Polling Booth locations.

It is not an official map of Local Area Electoral Boundaries. Official maps of Local Area Electoral Boundaries are available from SmartMap, Department of Environment and Resource Management, Woolloongabba.

© The State of Queensland - 2012
(Department of Environment and Resource Management)
© Electoral Commission of Queensland 2012