

Polling Booth Location Map

ELECTORAL DISTRICT

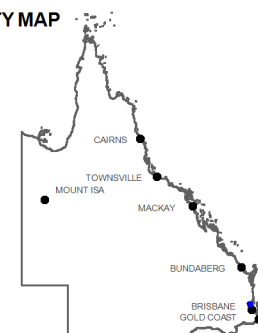
**MORAYFIELD**

**Polling Booths:** 16  
**Electors :** 30,283  
**Close of Roll:** 25 February 2012

LEGEND

- **Polling Booth Name**
- **District Boundary**
- DISTRICT NAME* **Adjacent District**

LOCALITY MAP

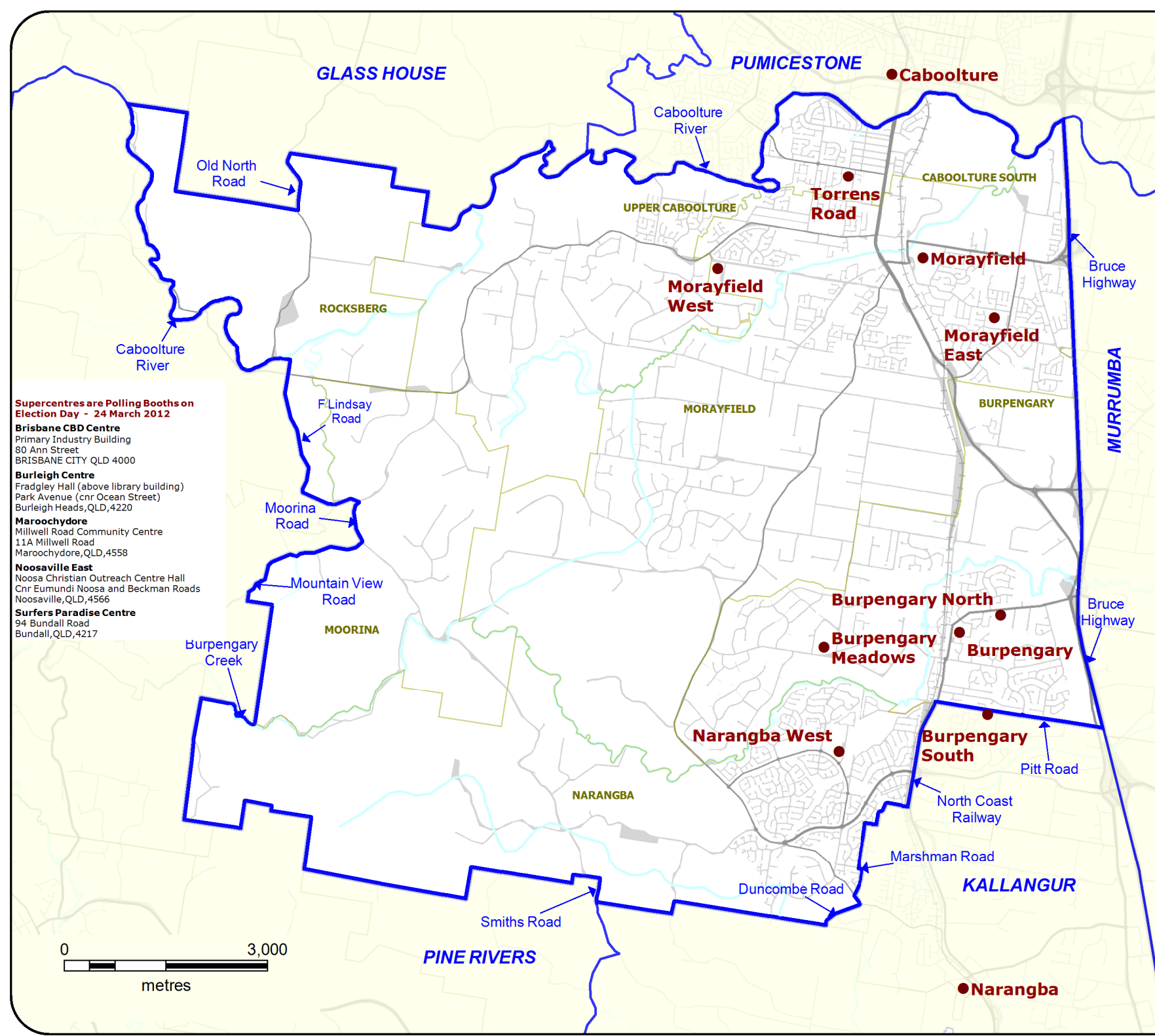


DISCLAIMER

While every care is taken to ensure the accuracy of this data, the Electoral Commission of Queensland (ECQ) makes no representations or warranties about its accuracy, reliability, completeness or suitability for any particular purpose and disclaims all responsibility and all ability (including, without limitation, liability in negligence) for all expenses, losses, damages (including indirect and consequential damage) and cost which might be incurred as a result of the data being inaccurate or incomplete in any way and for any reason. This map has been produced by the ECQ as a guide to show the location of the Electoral District Boundaries and Polling Booth locations.

It is not an official map of Electoral District Boundaries. Official maps of Electoral District are available from SmartMap, Department of Environment and Resource Management, Woollongabba.

© The State of Queensland - 2012  
(Department of Environment and Resource Management)  
© Electoral Commission of Queensland 2012



**Supercentres are Polling Booths on Election Day - 24 March 2012**

- Brisbane CBD Centre**  
Primary Industry Building  
80 Ann Street  
BRISBANE CITY QLD 4000
- Burleigh Centre**  
Fragdley Hall (above library building)  
Park Avenue (cnr Ocean Street)  
Burleigh Heads, QLD, 4220
- Maroochydore**  
Millwell Road Community Centre  
11A Millwell Road  
Maroochydore, QLD, 4558
- Noosaville East**  
Noosa Christian Outreach Centre Hall  
Cnr Eumundi Noosa and Beckman Roads  
Noosaville, QLD, 4566
- Surfers Paradise Centre**  
94 Bundall Road  
Bundall, QLD, 4217