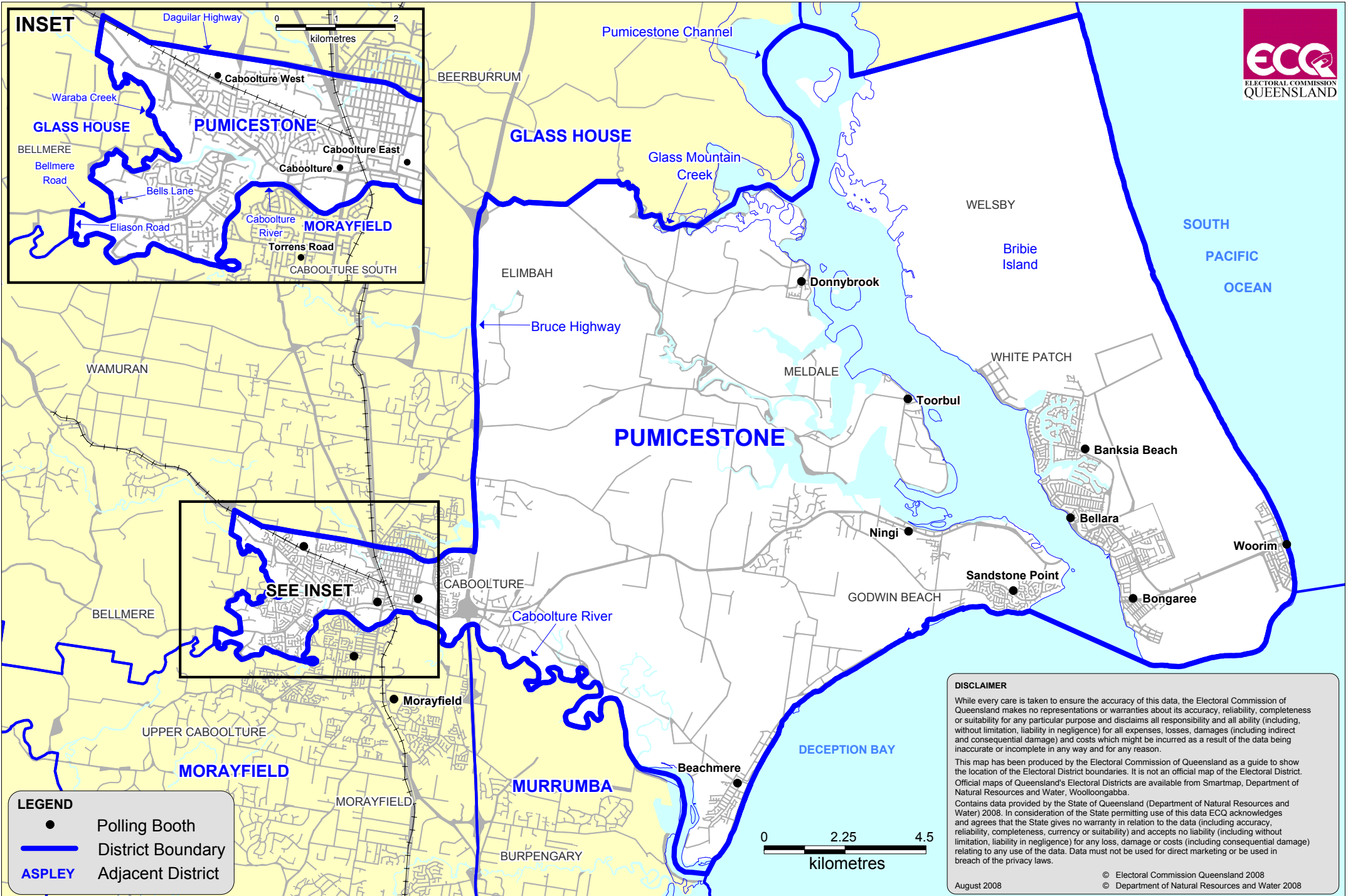


QUEENSLAND STATE ELECTION 2009 SHOWING POLLING BOOTH LOCATIONS
Pumicestone District Electors at Close of Roll: 32,141 No. of Booths: 15



DISCLAIMER

While every care is taken to ensure the accuracy of this data, the Electoral Commission of Queensland makes no representations or warranties about its accuracy, reliability, completeness or suitability for any particular purpose and disclaims all responsibility and all ability (including, without limitation, liability in negligence) for all expenses, losses, damages (including indirect and consequential damage) and costs which might be incurred as a result of the data being inaccurate or incomplete in any way and for any reason.

This map has been produced by the Electoral Commission of Queensland as a guide to show the location of the Electoral District boundaries. It is not an official map of the Electoral District. Official maps of Queensland's Electoral Districts are available from Smartmap, Department of Natural Resources and Water, Woolloongabba.

Contains data provided by the State of Queensland (Department of Natural Resources and Water) 2008. In consideration of the State permitting use of this data ECQ acknowledges and agrees that the State gives no warranty in relation to the data (including accuracy, reliability, completeness, currency or suitability) and accepts no liability (including without limitation, liability in negligence) for any loss, damage or costs (including consequential damage) relating to any use of the data. Data must not be used for direct marketing or be used in breach of the privacy laws.

August 2008

© Electoral Commission Queensland 2008
 © Department of Natural Resources and Water 2008